



**Whirinaki**  
Whare Taonga

ARTS | CULTURE | EVENTS

Venue Hire







# Contents

Introduction	1
Theatre	3
Recreation Hall	7
Green Room	10
Creative Classroom	11
Recreation Hall Foyer	12
Commercial Kitchen	13
Court	14
Foyer	15
Dough Bakery	17
Packages	19

# Introducing Whirinaki Whare Taonga

Whirinaki Whare Taonga is an award-winning arts, culture and events centre based in Te Awakairangi ki Uta / Upper Hutt and is a spectacular venue for a memorable daytime or evening event.

With a striking three-level glass facade fronting a magnificent interior space, state of the art sophisticated theatre, large civic hall, unique meeting rooms and fully equipped commercial kitchen, together with an ever-changing suite of contemporary eye-catching exhibitions, Whirinaki is a sophisticated and inspiring venue for any event.

Our impressive spaces have been designed to be flexible and are perfect for performances, corporate events, lectures and conferences, cocktail parties, weddings, seated dinners, intimate meetings as well as sporting events and public expos.

---

*Host your guests surrounded by eye-catching, contemporary New Zealand and international artworks in an architectural space which oozes charm and drama.*

---



We offer a range of venue hire options at competitive prices - from the intimate spaces of the foyer to the generous civic hall and theatre to private exhibition viewings. At Whirinaki you can use our on-site caterer Dough Bakery, choose your own caterer, or cater your own event making it flexible for commercial and community events.

With rail links right on the doorstep direct from Wellington CBD or thirty minutes' drive from the central city and an easy stroll from the region's premiere entertainment precinct Brewtown, Whirinaki is uniquely situated to serve your conferences, expos and social events.

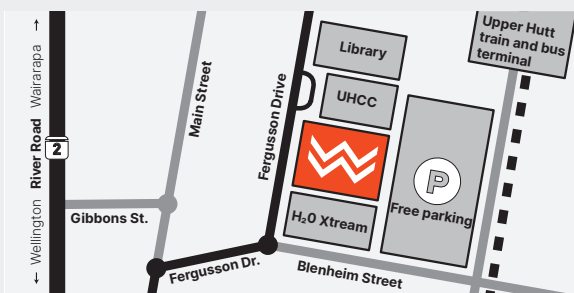
Our dedicated team can support you make your event the best it can be.



## LOCATION

Whirinaki is situated in the heart of Upper Hutt's Civic and Cultural Precinct, right next door to H2O Xtreme and Upper Hutt City Council buildings.

We are just a short trip from Wellington central at 836 Fergusson Drive, Upper Hutt or a five-minute walk from the railway station and on the main bus route.



## BOOKING

To enquire about venue availability and arrange a site visit, please call or email.

**T** (04) 527 2168 / 021 430 561

**E** [bookings@whirinakiarts.org.nz](mailto:bookings@whirinakiarts.org.nz)

**W** [whirinakiarts.org.nz](http://whirinakiarts.org.nz)

Open every day, 10am – 4pm

## ALCOHOL

This is not a BYO venue. Please note clients are required to either apply for a special licence with Upper Hutt District Licensing committee or provide proof of the liquor licence of your caterer to the centre before you will be permitted to serve alcohol on site. If applying for a license you will need to allow at least 20 working days before your event.





# Gillies Group Theatre

CAPACITY: 210

**Our prestigious theatre allows great flexibility to accommodate everything from theatre performances, dance and ballet showcases, live bands, classical concerts, and seminars to product and programme launches.**

Create a dramatic setting, for your awards presentation or gala dinner completed with traditional plush red house curtains or let your guests become the stars of the night by hosting directly on the spacious stage. Talk to us about the theatre for use as a development space for your production or put the spotlight on keynote speakers at your conferences.

This state-of-the-art theatre can seat up an audience of up to 210 in a tiered setting and features a large wooden sprung stage floor. Your booking also comes with the support of fully fitted backstage changing rooms and green room as well as access to Gibbs Court, an indoor-outdoor lobby with the best views over the valley.

The Gillies Group Theatre is also home of a Steinway Model D 9ft concert grand piano, one of the few in the country. An intimate space with natural acoustics as well as the latest audio, visual and traditional theatre lighting technology and a skilled team of in-house technicians, this theatre has everything to offer your event, with a touch of glamour.

PROUDLY SPONSORED BY THE GILLIES GROUP

VENUE HIRE | THEATRE



*dramatic &  
deluxe*

VENUE HIRE | THEATRE



## HOW THE THEATRE IS HIRED

The theatre is hired as a managed venue. We provide the space, a Front of House Manager and a Technician to manage the theatre, as well as ticketing services, cashier's and ushers. Included in your hire is a Technician who oversees the venue and works with you to achieve your audio-visual requirements. This includes the use of a pre-focused and set-up standard lighting rig and the use of the standard Line Array Sound System.

## INCLUDED

- Includes Technical Supervisor/ Manager for 5/10/15 hours and FOH Manager and 2 ushers for 3 hours
- Full use of green rooms and dressing rooms
- Use of a pre-focused and set-up standard lighting rig
- Use of standard Line Array Sound System and a single cabled microphone stand mounted
- If speciality rigging/sound is required then pricing is on application
- Genie hoist (approved operators only)
- Lectern
- Freight lift access to the theatre
- Sound loop for the hearing impaired
- Boston upright practice piano
- Stage relay to green room and backstage

## CAPACITY

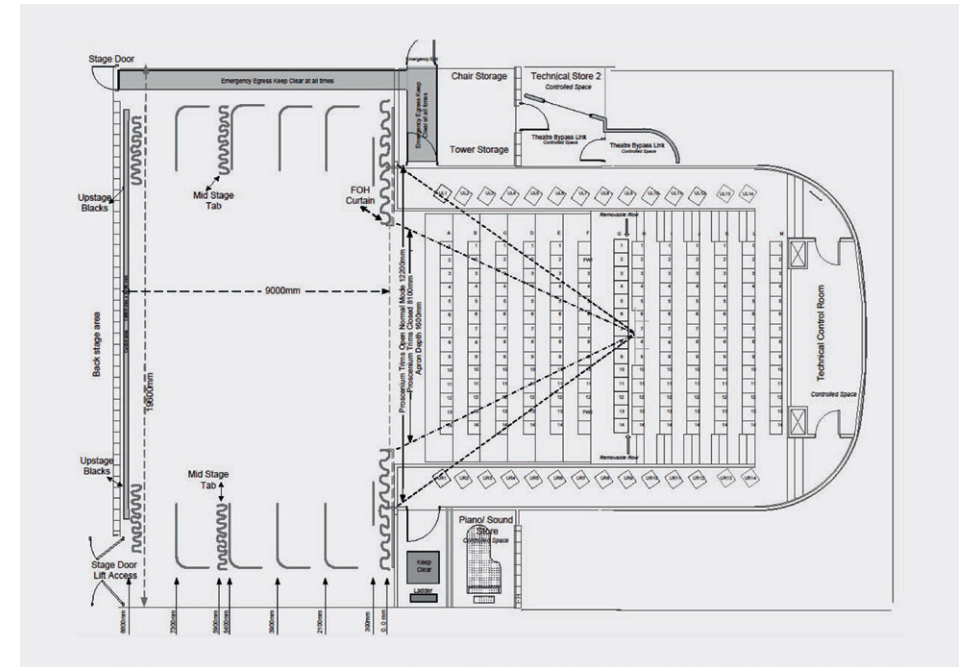
- 210 seated

## STAGE DIMENSIONS

- 19.5m width stage and wings
- 12.3m wide proscenium
- 8.1m closed proscenium
- 11.1m front to rear stage
- 5.2 m from stage to grid
- No fly tower

## AVAILABLE TO HIRE

- Additional technician if you require BOTH sound and lighting
- Theatre video projector (please supply own laptop)  
12000 ANSI LUMEN LASER
- Roland Vision mixer
- Smoke machine
- Specialty lighting/rigging (pricing on application)
- Steinway Model D Concert Grand Piano





# Sound & Lighting Equipment

## SOUND EQUIPMENT

### GENERAL

- [7x] Line array speakers  
RCF HDL-20A, 3 FLOWN EACH SIDE OF THE PROS ARCH – INSTALLED WITH ONE SINGLE CABINET WITH SUMMED INPUT FOCUSED AS A LOW LEVEL CENTRE FILL FOR THE FIRST FEW ROWS OF THE THEATRE
- [2x] Active line array sub enclosures  
RCF HDL-19, ONE FLOWN EACH SIDE OF THE PROS ARCH INSTALLED
- [1x] Stagebox ALLEN & HEATH AR2412
- [1x] Stagebox ALLEN & HEATH AR84
- [1x] Mixing desk ALLEN & HEATH QU-32

### STAGE SYSTEM

- [6x] Passive co-axial 2-way 12”  
TURBOSOUND TFM-122M, 60° H x 40° V, LOW PROFILE
- [3x] Power Amp  
LAB GRUPPEN IPD-2400, 1200W @ 4 OHMS, INSTALLED 2 CHANNEL
- [2x] Australian Monitor full range 12” general stage fold back

### MICROPHONES

- [5x] Green band and stand clips  
AKG3800
- [3x] Black band and stand clips  
AKG3800
- [5x] Shure Beta 58As and stand clips
- [5x] Shure SM57 and stand clips
- [1x] 7-piece Samson drum microphone kit
- [17x] K&M microphone boom stand  
MODEL 210/9
- [4x] banquet stands with boom arms

### STAGE ACCESSORIES

- [5x] Samson mono DI boxes
- [1x] Samson stereo DI box
- [1x] Utility stereo-input DI box
- [1x] Samson single-channel handheld radio microphone system
- Control room replay
- Stinger software spot player facilitated on a Power PC Control room only
- Tascam Professional CD player
- Tascam MiniDisc player  
(NOT INSTALLED, BUT AVAILABLE)
- [2x] Matching Tascam CD media players in single case for side stage use

## LIGHTING EQUIPMENT

### LIGHTING CONTROL

- Philips Neo Console
- Strand Pallet 64 Console
- Strand Classic Console

### LIGHTING INSTRUMENTS

- [4x] Ellipsoidal spots SOURCE 4, 70°, 750W
- [10x] Profile spots SELECON SPX, 800W
- [32x] Pebble convex SELECON PC, 1200W
- [27x] Fresnels SELECON SF, 1200W
- [18x] Fresnels STRAND 243, 2000W
- [9x] Profile spots SELECON SF 2000
- [15x] Profile spots STRAND SL, 600W, 23°/50°
- [10x] Profile spots STRAND SL, 600W, 15°/32°
- [6x] Gobo holders
- [120x] Dimmer channels 2kW
- [320x] Patchable production lighting channels distributed theatre wide
- [9x] LED fresnels in permanent position  
INFINITYTS-260C7





# Theatre Rates

	Commercial	Community 1	Community 2
<b>5-hour session</b> <ul style="list-style-type: none"> <li>— Morning (8am–1pm)</li> <li>— Afternoon (1pm–6pm)</li> <li>— Evening (6pm–11pm)</li> </ul>	\$550 \$600 \$750	\$480 \$480 \$585	\$425 \$425 \$550
<b>10-hour session</b> <ul style="list-style-type: none"> <li>— Morning start (8am–6pm)</li> <li>— Afternoon start (1pm–11pm)</li> </ul>	\$950 \$995	\$800 \$850	\$650 \$650
<b>15-hour session</b> <ul style="list-style-type: none"> <li>— Full day/night (8am–11pm)</li> </ul>	\$1200	\$980	\$850
<b>Pre-event set up day</b> <ul style="list-style-type: none"> <li>— Full day (9am–5pm)</li> </ul>	\$200	\$200	\$200
<b>Extras</b> <ul style="list-style-type: none"> <li>— Extra hours after 11pm</li> <li>— Extra FOH staff (per hour)</li> <li>— Extra sound/lighting technician (per hour)</li> <li>— Piano hire</li> <li>— Piano tuning</li> <li>— Projector (per day)</li> <li>— Projector (4-day hire)</li> <li>— Smoke machine</li> </ul>	\$200 \$30 \$50 \$100 \$250 \$350 \$750 \$75	\$200 \$30 \$50 \$100 \$250 \$350 \$750 \$75	\$200 \$30 \$50 \$100 \$250 \$350 \$750 \$75
<p>■ Commercial hire rate is for commercial business and events</p> <p>Community rates are for not-for-profit community groups or charitable trusts:</p> <p>■ Community 1: ticketed events</p> <p>■ Community 2: non-ticketed, free or by-donation events</p>	<p><b>Please note</b></p> <ul style="list-style-type: none"> <li>— All prices are GST exclusive</li> <li>— If speciality rigging/sound is required then pricing is on application</li> </ul>		



## RUBBISH

You must remove all event rubbish.

## ALCOHOL

This is not a BYO venue. Please note clients are required to either apply for a special licence with Upper Hutt District Licensing committee or provide proof of the liquor licence of their caterer to the centre before they will be permitted to serve alcohol on site.





# Professionals Recreation Hall

CAPACITY: 500-750

**With all the space you'll need and more, the Professionals Recreation Hall, with its generous 990m<sup>2</sup> sprung matai floor is the perfect location to cater to those larger events with up to 600 seating capacity.**

This huge venue is a dry hire venue. We provide the space, and you provide or arrange everything else, perfect for community celebrations, weddings, conventions, dances or gala dinners and unique for your special expo or exhibition. Your guests can be welcomed either through the beautiful rear foyer or the main reception foyer and the hall can be themed to your liking. Please ask us for our picks for top notch theming, AV providers, DJs and bands or talk with us about a private viewing of our galleries as part of your event. We would love to work with you on finding the perfect additions to your gathering.

The Professionals Recreation Hall has easy load-in access and is supported by a servery/bar with the option of also booking a fully equipped commercial kitchen and the adjacent Creative Classroom for breakout/support space if required, or the theatre for your keynote speaker.

**PROUDLY SPONSORED BY DAN MARK PROFESSIONALS**

## HOW THE HALL IS HIRED

The hall is hired as a dry hire venue. We provide the space, and you provide or arrange everything else: i.e., caterers, audio visual services, setting up of tables and chairs etc. Included in your hire is a Venue Manager who hosts you, oversees the venue and health and safety, but does not run, set up or clean up after your event.

### CAPACITY

- 750 standing
- 600 in rowed seating
- 500 at round tables

### INCLUDED

- A Venue Manager during your event for up to 100 people\*
- Use of the Recreation Hall Foyer
- Use of the Bar/Servery
- Complimentary Wi-Fi
- Use of the stage (in situ)
- Use of rectangle tables and chairs
- Receipt of pre-event deliveries
- 27 coloured ceiling down lights and dimmable main room lights
- Public address system (6 zone) for voice announcements with two wireless microphones available
- [600x] plastic stacking chairs
- [40x] trestle tables at 180 x 75cm
- [20x] trestle tables at 240 x 75cm
- Lectern

### DIMENSIONS

- **Hall:** 22.5m x 47.5m (D x W)
- **Stage:** 4.8m x 9.6m x 0.84m (D x W x H)

### NOT INCLUDED

- (\*) Events over 100 people will require additional staff (1 staff per 100 people) for fire and evacuation purposes at \$50 an hour
- Service staff to serve food, set up tables and chairs or pack down

### AVAILABLE TO HIRE

- Reconfiguration of the stage
- Draping the walls of the Recreation Hall with black fabric
- Projector and small pop-up screen

### PACK DOWN

A compulsory pack down and cleaning crew is required for catered events over 100. This crew packs down tables and chairs, but does not remove tableware or decorations.



### RUBBISH

You must remove all event rubbish.

### CATERING

Yes, you can arrange your own catering! A cleaning crew and skip bin is compulsory for catered events over 100 people. You or your caterer need to provide service staff to serve food, set up tables and chairs, and pack down.

### ALCOHOL

This is not a BYO venue. Please note clients are required to either apply for a special licence with Upper Hutt District Licensing committee or provide proof of the liquor licence of their caterer to the centre before they will be permitted to serve alcohol on site.

A security guard is required for all events serving alcohol (\$50/hour).



## Recreation Hall Rates

	Commercial	Community 1	Community 2
<b>5-hour session</b>			
— Morning (8am–1pm)	\$380	\$280	\$270
— Afternoon (1pm–6pm)	\$450	\$320	\$290
— Evening (6pm–11pm)	\$500	\$400	\$350
<b>10-hour session</b>			
— Morning start (8am–6pm)	\$750	\$550	\$510
— Afternoon start (1pm–11pm)	\$850	\$620	\$550
<b>15-hour session</b>			
— Full day (8am–11pm)	\$1100	\$800	\$750
<b>Hourly</b> (in addition to block sessions only)	\$80	\$55	\$55
<b>Staffing</b>			
— After hours staffing, after 11pm (hourly)	\$100	\$100	\$100
— Extra staff per 100 (hourly)	\$50	\$40	\$40
— Security guard (hourly)	\$50	\$50	\$50
— Sound or lighting technicians (hourly)	\$50	\$50	\$50
— Pack down cleaning crew	\$550	\$550	\$550
COMPULSORY FOR CATERED EVENTS OVER 100			
<b>Extras</b>			
— Hall draping (optional)	\$500	\$500	\$500
— Skip bin COMPULSORY FOR LARGE CATERED EVENTS	\$250	\$250	\$250
— Moving stage	\$500	\$500	\$500
— Sound system hire	\$350	\$350	\$350
— Projector	\$250	\$250	\$250
— Projector screen	\$100	\$100	\$100
— Table cloths (each)	\$20	\$20	\$20
— Tea and filter coffee (per person)	\$4	\$4	\$4



■ Commercial hire rate is for commercial business and events

Community rates are for not-for-profit community groups or charitable trusts:

■ Community 1: ticketed events

■ Community 2: non-ticketed, free or by-donation events

### Please note

— All prices are GST exclusive

# Green Room

CAPACITY: 20–50

The Green Room is a self-contained workshop space bookable for short or full day meetings, workshops and break-out activities.

This space seats 20 to 30 people around the board room table with views of the Upper Hutt hills. Please note: this area is up several flights of stairs and is not wheelchair accessible.

## CAPACITY

- 20–30 seated
- 50 people informal standing

## INCLUDED

- A Venue Manager during your event
- Boardroom table and chairs
- Complimentary Wi-Fi (unsecured network)
- AV projector and screen (please bring your own laptop)
- Kitchenette facilities with hot water and fridge
- Use of teacups
- Water and mints on table
- Whiteboard
- Conference stationery
- Rubbish removal

## RATES

	Commercial	Community 1	Community 2
<b>Hourly</b> 8am–4pm, minimum 2 hours	\$75	\$66	\$66
<b>Full-day rate</b> 8 hours	\$300	\$280	\$280
Tablecloths (each)	\$20	\$20	\$20
Tea and filter coffee (per person)	\$4	\$4	\$4

Please note: all prices are GST exclusive

■ Commercial hire rate is for commercial business and events

Community rates are for not-for-profit community groups or charitable trusts:

■ Community 1: ticketed events

■ Community 2: non-ticketed, free or by-donation events



## HOW THE GREEN ROOM IS HIRED

The Green Room, when hired in isolation of the theatre, is hired as a managed/serviced venue. We provide the space, and a Venue Manager who will set up the room for you and pack it down afterwards.



# Creative Classroom

CAPACITY: 50

The Creative Classroom is a multipurpose, intimate meeting space.

It is available weekdays after 4pm, anytime in the school holidays, and in the weekends and evenings. This space seats 30 to 40 people comfortably and is equipped with adjustable tables and chairs. This light and airy space features an integrated indoor and outdoor space and entrance and includes use of the servery/bar. We can design our creative classroom around your meeting catering for 15 to 50 guests – with multiple configurations available. Combine your workshop or function with a tour through our galleries to create that unique event.

## CAPACITY

- 50 people informal standing
- 40 seated

## INCLUDED

- A Venue Manager during your event
- Classroom style tables and chairs
- Large 88-inch smart screen (please bring your own laptop and HDMI output)
- Complimentary Wi-Fi
- Servery/Bar facilities with hot water and fridge
- Use of glasses and teacups
- Water and mints on table
- Conference stationery
- Rubbish removal

## RATES

	Commercial	Community 1	Community 2
<b>Hourly</b> After 4pm, min. 2 hrs	\$75	\$66	\$66
<b>8-hour rate</b> Available weekends and school holidays, 8am–4pm	\$420	\$350	\$350
Tablecloths (each)	\$20	\$20	\$20
Tea and filter coffee (per person)	\$4	\$4	\$4
<b>Please note:</b> all prices are GST exclusive ■ Commercial hire rate is for commercial business and events Community rates are for not-for-profit community groups or charitable trusts: ■ Community 1: ticketed events ■ Community 2: non-ticketed, free or by-donation events			



## HOW THE CREATIVE CLASSROOM IS HIRED

The Creative Classroom is hired as a managed/serviced venue. We provide the space, and a Venue Manager who will set up the room for you and pack it down afterwards.

# Professionals Recreation Hall Foyer

CAPACITY: 50

The Professionals Recreation Hall Foyer is a beautiful modern event space, featuring elegant red tiles and polished concrete floors.

Available weekdays after 4pm, any time in the school holidays, weekends and evenings, this space houses 50 people comfortably and is perfect for drinks and nibbles and intimate functions.

## CAPACITY

- 50 people informal standing

## INCLUDED

- A Venue Manager during your event
- Complimentary Wi-Fi
- Use of glasses and teacups
- Rubbish removal
- Servery/bar facilities, including hot water and fridge
- Glass-door chiller, single door
- Under-counter bar fridge
- Trestle tables and chairs on request
- Lectern

SKOPE TME650-A, 745 x 740 x (INCL. HANDLE)  
x 2200mm (D x W x H)

FOUR SWING DOORS, SKOPE BB780X  
590 x 2620 x 920mm (D x W x H)

## RATES

	Commercial	Community 1	Community 2
<b>Hourly</b> (min. 2 hrs)	\$200	\$100	\$100
Security guard (hourly)	\$50	\$50	\$50
Tablecloths (each)	\$20	\$20	\$20
Tea and filter coffee (per person)	\$4	\$4	\$4
<b>Please note:</b> all prices are GST exclusive			
■ Commercial hire rate is for commercial business and events			
Community rates are for not-for-profit community groups or charitable trusts:			
■ Community 1: ticketed events			
■ Community 2: non-ticketed, free or by-donation events			



## HOW THE HALL FOYER IS HIRED

The Hall Foyer is hired as a managed/ serviced venue. We provide the space, and a Venue Manager who will set up the room and pack it down afterwards.

## ALCOHOL

This is not a BYO venue. Please note clients are required to either apply for a special licence with Upper Hutt District Licensing committee or provide proof of the liquor licence of their caterer to the centre before they will be permitted to serve alcohol on site.

A security guard is required for all events serving alcohol (\$50/hour).



# Commercial Kitchen

Our commercial kitchen features the essentials you will need to cater your event.

Available for hire by caterers and hirers alike.

## HOW THE COMMERCIAL KITCHEN IS HIRED

The Commercial Kitchen is hired as a dry venue. We provide the space, and you clean it up after your hire, including rubbish removal.

### INCLUDED

- Pass-through dishwasher STARLINE M2C
- Tray digital/electric combi oven  
TURBOFAN EC40D10 & SK40-10A FULL SIZE 10
- Gas range convection oven,  
with cooktop  
BLUE SEAL G56D, 812 x 900 x 915mm (D x W x H)
- Walk-in chiller
- [2x] stainless steel prep bench,  
with shelf below  
700 x 2400 x 900mm (D x W x H)

**Please note:** all prices are GST exclusive

■ **Commercial** hire rate is for commercial business and events

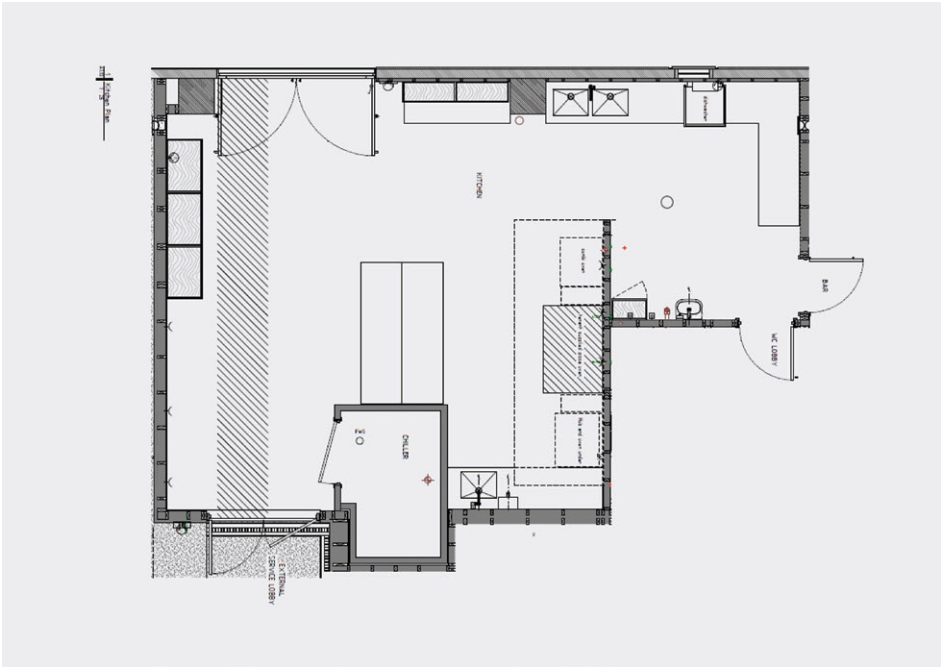
Community rates are for not-for-profit community groups or charitable trusts:

■ **Community 1:** ticketed events

■ **Community 2:** non-ticketed, free or by-donation events

### RATES

	Commercial	Community 1	Community 2
<b>Booking</b>			
Full day (8 hours)	\$400	\$350	\$350
Half day (4 hours)	\$200	\$180	\$180
Hourly rate (min. 2)	\$75	\$66	\$66
Compulsary cleaning charge	\$200	\$200	\$200
Tablecloths (each)	\$20	\$20	\$20
Tea and filter coffee (per person)	\$4	\$4	\$4



# Gibbs Court

CAPACITY: 20–50

Our beautiful open air courtyard, on the first floor, provides one of the best views in Upper Hutt.

Perfect for your summer evening rooftop experiences, social functions, meetings and work dos. This space has an intimate indoor area and large covered outdoor area creating fabulous indoor and outdoor flow. Our licensed café can meet your needs with flexible food and drink options catered on-site whilst your guests enjoy one of the best sunset views that Upper Hutt has to offer. Available after 4pm, seven days a week.

## CAPACITY

- 50 people informal standing
- 20 people seated

## INCLUDED

- A Venue Manager during your event (for up to 50 people)
- Complimentary Wi-Fi
- Use of teacups
- [8x] Lounge chairs
- [2x] Coffee tables
- Trestle tables as required
- Rubbish removal

## RATES

	Commercial	Community 1	Community 2
<b>Hourly</b> (min. 2 hrs)	\$200	\$100	\$100
Security guard	\$50	\$50	\$50
Tablecloths (each)	\$20	\$20	\$20
Tea and filter coffee (per person)	\$4	\$4	\$4

**Please note:** all prices are GST exclusive

■ **Commercial** hire rate is for commercial business and events

Community rates are for not-for-profit community groups or charitable trusts:

■ **Community 1:** ticketed events

■ **Community 2:** non-ticketed, free or by-donation events



## HOW GIBBS COURT IS HIRED

Gibbs Court is hired as a managed/ serviced venue. We provide the space, and a Venue Manager who will set up your room for you and pack it down afterwards.

## ALCOHOL

This is not a BYO venue. Please note clients are required to either apply for a special licence with Upper Hutt District Licensing committee or provide proof of the liquor licence of their caterer to the centre before they will be permitted to serve alcohol on site.

A security guard is required for all events serving alcohol (\$50/hour).



# Rotary Foyer

CAPACITY: 80-150

**Looking for the catered touch for your intimate family celebration or seated dinner? Need a venue with a difference for a special meeting?**

Our foyer with its native wooden floors, natural river stones, elegant tiles façade and stunning carving *Te Manawa* by carver David Te Hira will meet the needs of your event.

The foyer is available for corporate evenings and private viewings of our galleries available after 4pm every day and can be hired separately or together with the Theatre, Hall and Creative Classroom.

Our grand piano is available for live music possibilities.

---

## HOW THE ROTARY FOYER IS HIRED

The Hall Foyer is hired as a managed/serviced venue. We provide the space, and a Venue Manager who will set up your room for you and pack it down afterwards.

## ALCOHOL

This is not a BYO venue. Please note clients are required to either apply for a special licence with Upper Hutt District Licensing committee or provide proof of the liquor licence of their caterer to the centre before they will be permitted to serve alcohol on site.

A security guard is required for all events serving alcohol (\$50/hour).

PROUDLY SPONSORED BY UPPER HUTT ROTARY

VENUE HIRE | ROTARY FOYER



VENUE HIRE | ROTARY FOYER



## CAPACITY

- 80–100 seated theatre style or seated at tables
- 150 standing

## INCLUDED

- A Venue Manager during your event (for up to 100 people)
- Complimentary Wi-Fi
- Use of glasses and teacups
- Rubbish removal
- Includes use of the community kitchenette (oven, microwave, sink etc)
- Trestle tables and chairs as required
- Lectern
- In-built public address system

## NOT INCLUDED

- Service staff to serve food, set up tables and chairs, and packing down

## AVAILABLE TO HIRE

- Projector and small pop-up screen

## RATES

	Commercial	Community 1	Community 2
<b>Hourly</b> (min. 2 hrs)	\$200	\$100	\$100
Extra staff per 100 (hourly)	\$50	\$40	\$40
Security guard	\$50	\$50	\$50
Tablecloths (each)	\$20	\$20	\$20
Tea and filter coffee (per person)	\$4	\$4	\$4

**Please note:** all prices are GST exclusive

■ **Commercial** hire rate is for commercial business and events

Community rates are for not-for-profit community groups or charitable trusts:

■ **Community 1:** ticketed events

■ **Community 2:** non-ticketed, free or by-donation events



# Dough Bakery

**To complement the high quality of our venue we are proud to be the home of Dough Bakery.**

Talk to Dough to tailor a custom menu for you and your guests. Whether it be a party, wedding or business meeting, Dough can cater for all food and beverage needs. Dough can help you choose suitable wine, beer, cocktails and food to suit any budget.

## ENQUIRES

upperhutt@doughbakery.co.nz

**Please note:** clients are required to either apply for a special licence with Upper Hutt District Licensing committee or provide proof of the liquor licence of their caterer to the centre before they will be permitted to serve alcohol on site when not using Dough as registered caterer.



WHIRINAKI WHARE TAONGA

# Whirinaki Store

**The perfect place to find an art book, unique card or new taonga made by a contemporary New Zealand artist. To see what's new in store, check out our Instagram feed.**

Featuring art and craft by leading artists from around New Zealand, including pottery, ceramics, craft, jewellery, books and more. Our Store is the perfect place to find a special gift or maybe a little something for yourself.

## OPENING HOURS

Mon – Sun, 10am – 4pm.



WHIRINAKI WHARE TAONGA

# Become a Friend of Whirinaki

**Joining the Friends of Whirinaki is a great way to support art and culture in Upper Hutt and to broaden your awareness of art, history and culture.**

Friends benefit from a range of special opportunities, including a 10% discount at the Store, discounted entry to ticketed events, exhibition previews, floor talks and special events.

Help champion Upper Hutt's access to art, culture and events, stage world-class exhibitions and events and nurture creativity for our children. Your support is crucial in ensuring we can continue to present the unique role of art and artists in these exceptional times, as well as sharing the best-loved and boldest exhibitions and shows with our community.

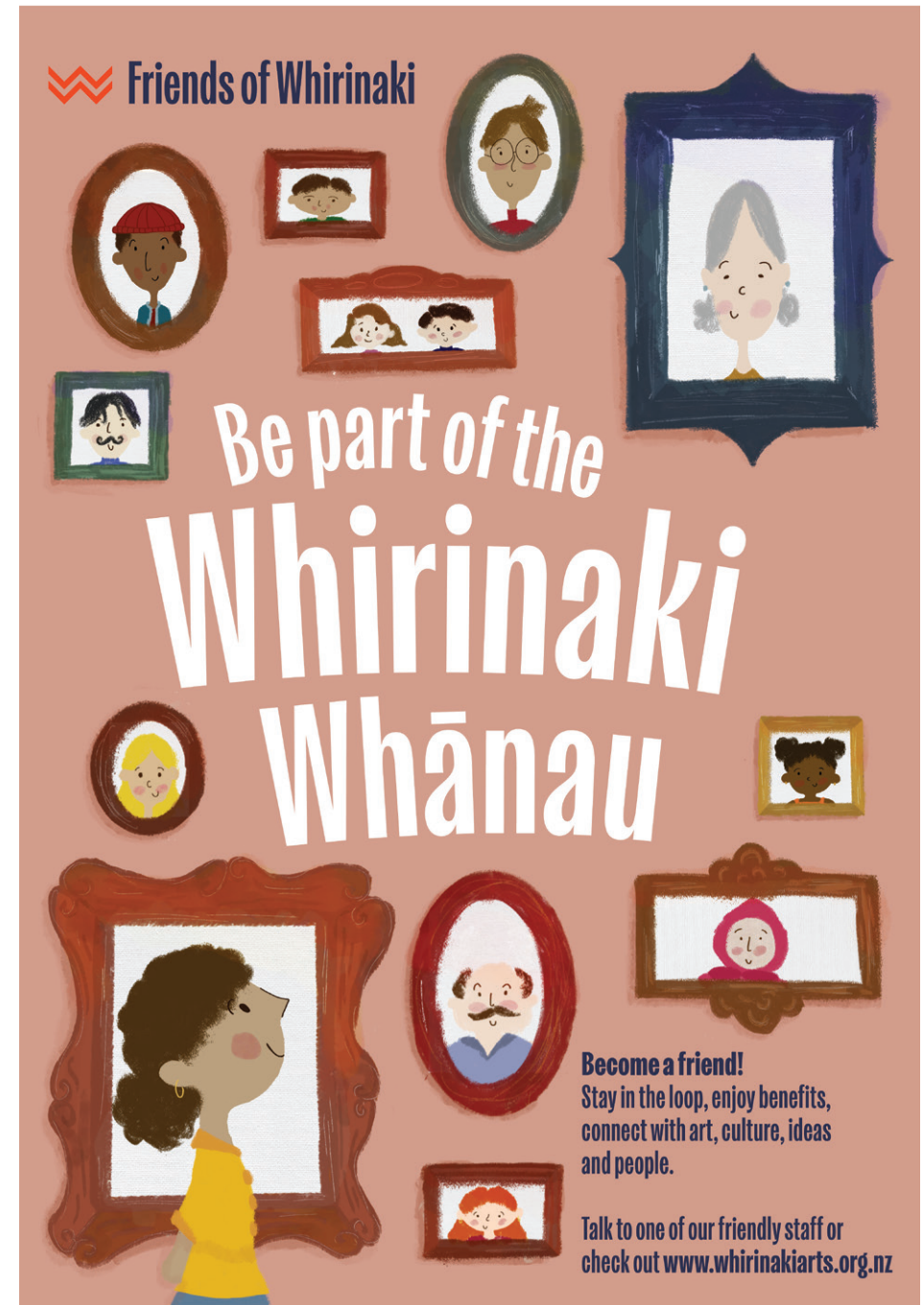
You also help care for our collection. Our Pumpkin Cottage Collection is made up of around 50 artworks which we care for with your support. Your support helps us look after the collection and deepen our communities understanding of it with regular exhibitions.

Our Friends help champion creativity for children. An important part of our role is to encourage everyone to develop their own creative potential – from fun activities for preschoolers to in-depth talks and tours for adults. As a Friend you help bring hundreds of schoolchildren to experience art in our galleries every year...for FREE.

## JOIN THE FRIENDS

**W** [whirinakaiarts.org.nz](http://whirinakaiarts.org.nz)

**T** (04) 527 2168



**Friends of Whirinaki**

Be part of the  
**Whirinaki Whānau**

**Become a friend!**  
Stay in the loop, enjoy benefits,  
connect with art, culture, ideas  
and people.

Talk to one of our friendly staff or  
check out [www.whirinakaiarts.org.nz](http://www.whirinakaiarts.org.nz)



# Packages



## Conference Package

**Conferences at Whirinaki offer a mix of function rooms sure to provide you with the perfect space for your next conference.**

This package is for a conference across the facility from 8am to 6pm using the Recreation Hall with the Creative Classroom theatre as breakout spaces, with multiple configurations available and options for breakout spaces, separate lounges for catering breaks and multiple sessions to run concurrently.

Professionals Recreation Hall:	
— Pack-in day (8am–6pm, 10 hours)	\$750
— Event day (8am–11pm, 15 hours)	\$1,100
— Theatre Hire (10 hours)	\$950
— Creative Classroom breakout space	\$420
— Commercial Kitchen hire	\$400
— Hall draping	\$500
— Skip bin hire	\$250
— Pack down cleaning crew	\$550
<b>TOTAL (ex. GST)</b>	<b>\$4,920</b>
<b>DISCOUNTED RATE (ex. GST)</b>	<b>\$4,750</b>

This package includes a Venue Manager during your event for up to 100 people. Events over 100 people will require additional staff (1 staff per 100 people) for fire and evacuation purposes at \$50 an hour per staff member.



## Wedding Package

**The large civic hall, artistic foyer entrance and supporting rooms make a beautiful spot for your special day.**

This package includes a Venue Manager during your event for up to 100 people. Events over 100 people will require additional staff (1 staff per 100 people) for fire and evacuation purposes at \$50 an hour per staff member. We provide the space, and you provide or arrange everything else: i.e., caterers, audio visual services, tables and chairs etc.

— Pack-in day (8am–6pm, 10 hours)	\$750
— Event day (8am–11pm, 15 hours)	\$1,100
— Commercial Kitchen hire	\$400
— Hall draping	\$500
— Skip bin hire	\$250
— Pack down cleaning crew	\$550
<b>TOTAL (ex. GST)</b>	<b>\$3,550</b>
<b>DISCOUNTED RATE (ex. GST)</b>	<b>\$3,250</b>

# Tēnā koe!

We look forward to  
booking your event soon.

---



**Whirinaki**  
Whare Taonga