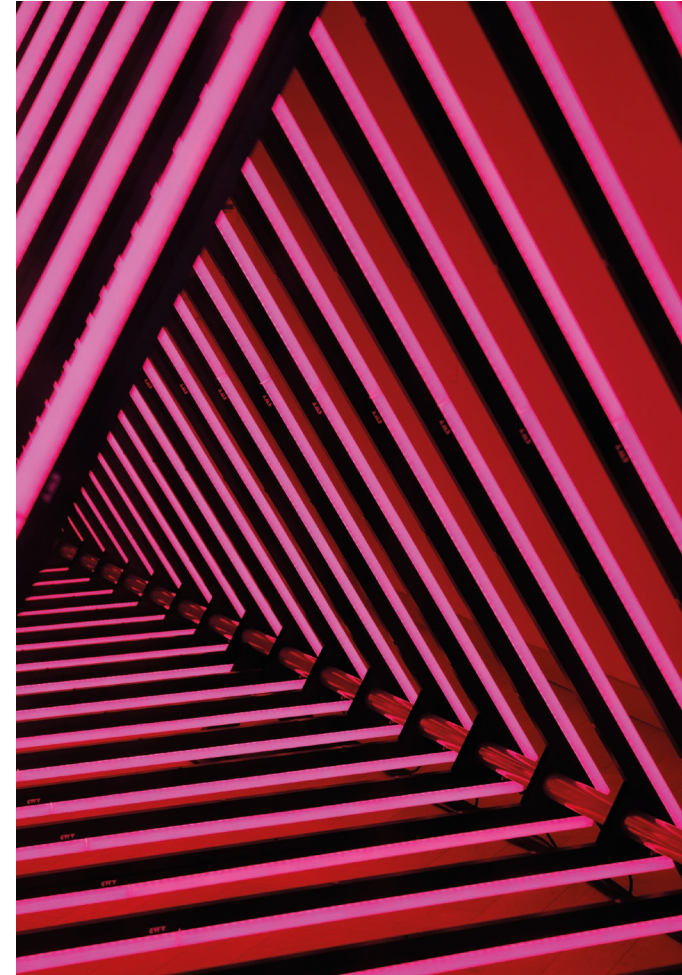




EXHIBITIONS



STACK

3 FEBRUARY – 28 APRIL

At first glance, Stack by Angus Muir presents a seemingly simple arrangement of shapes, yet, upon closer inspection, the intricacies of the installation reveal themselves. Each square lightbox forms a layered composition that draws the eye inward, beckoning the viewer to delve deeper into its visual landscape. As light emanates from within, the shapes come to life, casting gentle, radiant glows that traverse the surfaces.

Proudly presented in conjunction with the New Zealand Festival



**WHAKAPAPA CHAIN 6
STEVEI HOUKĀMAU**

24 FEBRUARY – 5 MAY

He Kākano a hau - Whakapapa Chain 3.0 is an uku (clay) taonga developed and made by Stevei Houkāmāu (Ngāti Porou and Te Whānau-ā-Apanui). The whakapapa chain is a physical manifestation of the links that connect us to our past and future. We are each part of a long line, a kākano in a chain that reaches back for generations and will continue long after us. But we are never lost – we continue to be part of the chain forever, giving it strength for generations to come. “Kia whakatōmuri te haere whakamua” – I walk backwards into the future with my eyes fixed on the past.

Image credit: Whakapapa Chain 6, 2023, Stevei Houkāmāu



FOUR ON THE FLOOR

UNTIL 3 MARCH

Four on the Floor brings together new works by four ceramic artists, Paula Archibald, Rebecca Neal, Sarah Urwin and Pip Woods. A biennial exhibition showcasing the art practices of artists who are shaping the future of ceramics.

Image credit: Where Rivers Meet, Sarah Urwin, clay, 2023



**DREAM LAB
HEATHER MAIN
KIRSTY GARDINER**

9 MARCH – 19 MARCH

Two artists have taken the title Dream Lab to create two very different experiences. Heather Main has created an immersive world of toads that possess the ability to blow enchanted bubbles, and Kirsty Gardiner has divined an archaeological site where lost birds and artefacts are found.

Image credit: Heather Main, Ancient-Wisperwort, 2023



ROIMATA

4 MAY – 30 JUNE

Roimata, by Robert Jahnke is an exhibition about the collusion between text and image that begs us to reflect, not only on our past, but also our present and, our future as citizens of the world.

Roimata means 'tear' while roimata toroa is a Māori pattern referencing albatross tears; misfortune and disaster. At the heart of the exhibition is Te Tomokanga o te Ua, the portal of the rain, which takes its name from the Hone Tuwhare's poem, 'Rain'; inviting a multi-sensual engagement with rain. In Roimata, the weeping expands beyond our mistreatment of the environment to our inhumane treatment of one another inviting us to weep for those subjected to the tyranny of ideological suppression and oppression.

Image credit: Norm Heke



MEDIEVAL TO METAL

25 MAY – 1 SEPTEMBER

Medieval to Metal: The Art & Evolution of the Guitar is an exhibition developed by the National Guitar Museum in the USA. Featuring 40 guitars spanning 400 years, Medieval to Metal traces the guitar's beginnings in Asia and Europe through to today's blues, country and rock 'n roll. From the intricately inlaid Moorish oud to the modern Italian design of the Eko and transparent acrylic body of California's BC Rich guitars, the exhibition takes visitors through the history and design of an object that is one of the most recognisable items on the planet.

The exhibition also includes illustrations of historically important guitar designs from noted artist Gerard Huerta and photographs of acclaimed musicians and their guitars by Neil Zlozower, one of the world's premier concert photographers.

Exclusive to Upper Hutt. Entry by donation.



ABC: 160 YEARS OF SCHOOLS IN UPPER HUTT

11 MAY – 21 JULY

A snapshot into Upper Hutt schools over the last 160 years. Walk down memory lane and learn how teaching has changed with memorabilia and photographs from around Upper Hutt. This exhibition will bring a new lens to learning, encouraging the importance of schooling and the memories it brings.

*Image credit: Upper Hutt College Bus, 1969 by Reville Jackson
Proudly supported by Heretaunga Bookfest Trust*



HOME: ONE CITY MANY CULTURES

18 DECEMBER – 12 MAY 2025

Home tells the stories of ten families who have travelled from other countries to make Upper Hutt their home. Here they share their personal journeys, their challenges, and their triumphs, and what it is like to leave one home behind, to create a new one.

Through their stories, hear insights into why they left, how they got here, and what brought them to Upper Hutt, New Zealand. Experience their fear, their joy, their sadness. Share in their struggles and rejoice with them in their successes. Most of all, celebrate the families and cultures that make Upper Hutt the multicultural community it is today.

Developed by Whirinaki Whare Taonga. Image credit: Margaret Abee Johns, photograph by Dianna Thomson, 2022. Supported by Lotteries Environment and Heritage.

PUBLIC PROGRAMMES



JAPANESE FILM FESTIVAL

SATURDAY 24 FEBRUARY & SUNDAY 25 FEBRUARY
FREE BOOKINGS ESSENTIAL

The Japanese Film Festival is coming to Upper Hutt. A festival giving insight into the culture, customs, and traditions of Japan, alongside what is popular with Japan's society today, through film. All films will be screened in Japanese with English subtitles.

Presented by Whirinaki in association with The Japanese Embassy

SATURDAY 24 FEBRUARY

Ito · 116 min · 1pm
The Fish Tale · 139 min · 3pm
We Make Antiques!
106 min · 5.50pm

SUNDAY 25 FEBRUARY

The House of the Lost on the Cape · 105 min · 1pm
Dreaming of the Meridian Arc
112 min · 3.15pm

ROIMATA TALK AND TOUR

SATURDAY 4 MAY · 4PM · FREE · NO BOOKING REQUIRED

Join artist Robert Jahnke (Ngai Taharora, Te Whanau a Iritekura, Te Whanau a Rakairo o Ngati Porou) to hear about his work in Roimata.



OPEN GAT JAM

SATURDAY 25 MAY · FREE · 1-3PM · NO BOOKING REQUIRED

In conjunction with Medieval to Metal, bring your guitar and plug in for your 10 minutes on stage. Amp and tech provided and complimentary hot drink. Solo guitar acts only, book your slot at info@whirinakiarts.org.nz

GUITAR WORKSHOPS

SUNDAY 16 JUNE · 1-3PM · \$45 PLUS BOOKING FEES · BOOKING REQUIRED

Join internationally touring session guitarist Tyson Smith for a masterclass in guitar tips and tricks.



LATE
NITE
SOUND
BITE

5-8PM · KOHA ENTRY

Late Nite Sound Bite is a once a week late night every Friday from February to April featuring fresh NZ music, gorgeous food at Dough Bakery and all galleries open until 8pm. Live music starts from 5.30pm and entry is by Koha.

2 Feb: Andrew London
Sophisticated Satirical Songs

9 Feb: PJD Trio
Instrumental Jazz Fusion

16 Feb: The Kugels
Accomplished Klezmer Quintet

23 Feb: Fraser Ross
Warm-hearted Folk

1 Mar: Jade Eru & The Revelators
Local Singing Legend

8 Mar: Tyson Smith
Virtuosic guitarist/Songwriter

15 Mar: Harvest Moon
Americana Sextet

22 Mar: Duncan Haynes
Superlative Jazz Piano

5 Apr: Kāhui
Original Electro/Acoustic
Storytelling

12 Apr: Marysia Collins
Jazz inflected Standards

19 Apr: Carter Parker Trio
Jazz Standards & more

26 Apr: Adam McGrath
(from The Eastern)
Original Americana

LUNCHTIME LIVE!

A series of lunchtime concerts given by performance students from Te Kōkī New Zealand School of Music. 1PM · Entry by donation

19 March

16 April

7 May

28 May

23 July

13 August

10 September

8 October

Lunchtime Live! is brought to you by Whirinaki Whare Taonga, The Upper Hutt Grand Piano Trust and Te Kōkī New Zealand School of Music at Victoria University of New Zealand.



THE NUKES

MONDAY 22 JANUARY · WORKSHOP · 11AM - NOON · \$10 PER CHILD
BOOKINGS ESSENTIAL

FAMILY PERFORMANCE · 2PM · \$5 PER ADULT, CHILDREN FREE WITH
ADULT TICKET (UP TO 5 CHILDREN TICKETS) · BOOKINGS ESSENTIAL

PUBLIC PERFORMANCE · 4PM
\$25 PER TICKET · BOOKINGS ESSENTIAL

PLUS BOOKING FEES

Featuring The Nukes, Aotearoa/NZ's most beloved and enduring 'original ukulele trio'. Expect family-friendly entertainment with their trademark humour, as well as top-flight musicianship.

ACTIVITIES FOR CHILDREN



LAND OF THE LONG LONG DRIVE

SATURDAY 13 APRIL · 1PM · \$10 PER TICKET PLUS BOOKING FEES
BOOKINGS ESSENTIAL

Wētā, Tuna, Kārearea and Gary the Glowworm, are traveling to attend a cave birthday party, facing trials on the road and learning that despite their differences, they can work together. A tale for Kiwi kids, featuring iconic New Zealand creatures, landscapes and waiata.

Presented by Whirinaki in association with Arts on Tour



HOW DO I FEEL?

SUNDAY 14 APRIL · 1PM & 3PM · \$35 PER ADULT PLUS BOOKING FEES
CHILDREN FREE · BOOKINGS ESSENTIAL

The New Zealand String Quartet together with children's entertainer Chris Lam Sam present a musical journey of emotions, combining the magic of music, illustration, and audience participation. A highly interactive 40-minute performance for the whole family.

Proudly supported by Creative Communities



LITTLE WHIRINAKI: ART FOR LITTLE PEOPLE

TUESDAY'S DURING TERM TIME · 9.15 - 10AM
\$35 PER TERM FOR MATERIALS

Weekly art sessions for little people aged 2.5-5 years old. 45 minutes of discovery and fun, with something new every week! Bookings are essential and caregiver supervision is required.

MUSIC & THEATRE AT WHIRINAKI



INDIA MEETS IRELAND

SATURDAY 3 FEBRUARY · 8PM · \$20 PER TICKET PLUS BOOKING FEES

A unique fusion of Indian classical music with contemporary and traditional Irish music, with Indian ragas, Irish musical tradition, and sitar, tabla, bouzouki and guitar.

Presented by Whirinaki in association with Arts on Tour



GENRE FLUID

FRIDAY 8 MARCH · 8PM · \$20 PER TICKET PLUS BOOKING FEES
BOOKINGS ESSENTIAL

Dynamic Kiwi duo, Genre Fluid, fuse music and theatre into high-energy funk-rock anthems with their unique synergy on stage, for all ages to groove and be moved, think Led Zeppelin.

Presented by Whirinaki in association with Arts on Tour



TE TUPUA THE GOBLIN

SATURDAY 11 MAY · 8PM · \$10 PER TICKET PLUS BOOKING FEES
BOOKINGS ESSENTIAL

An expertly crafted solo performance, bringing to life nine characters and an extraordinary corner of New Zealand history.

Presented by Whirinaki in association with Arts on Tour

CLASSICAL EXPRESSIONS 2024



AURUM TRIO

THURSDAY 18 APRIL · 7.30PM

A flute, cello and harp trio featuring Barbara Hill a flautist from Berlin, Germany, with Robert Ibell and Michelle Velvin.

Brought to you in conjunction with Chamber Music New Zealand



AMICI ENSEMBLE

THURSDAY 9 MAY · 7.30PM

The Amici Ensemble led by NZSO Associate Concertmaster Donald Armstrong performing two of the most beautiful string quintets by Mozart and Brahms.



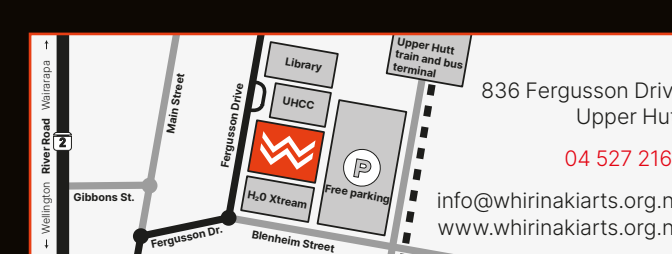
ANDREW JOYCE AND JIAN LIU

THURSDAY 27 JUNE

Renowned New Zealand based musicians Andrew Joyce and Jian Liu bring an ambitious programme that celebrates their musical and cultural heritages.

Brought to you in conjunction with Chamber Music New Zealand \$35 Adult · \$30 Concession (Friends/Piano Club/Upper Hutt Music Society) · Booking fees apply

INFORMATION



9am-4pm, seven days a week
One hour prior to performance on show nights

Upper Hutt isite Visitor Information Centre:
Looking for something to do? Come and see us first for all of your travel bookings, Snapper card supplies and accommodation needs.

BOOKING TICKETS: to book tickets, either pop in to Whirinaki Whare Taonga, call 04 527 2168, or book online at www.whirinakiarts.org.nz
Booking fees online apply.

EAT & DRINK: for opening hours of Dough Bakery, please visit our website

VENUE HIRE: whether you're holding a conference, a public meeting, a wedding, providing corporate training, hosting a business dinner or giving a presentation, Whirinaki Whare Taonga can meet your needs. Ask us how we can help you host a memorable event.

SHOP: our shop is open every day 9am - 4pm for the very best New Zealand made art, design and gifts.

Enquiries to 04 527 2168 or info@whirinakiarts.org.nz

FREE Wifi and Reading Area: Wifi is available throughout the building with a reading area in Gibbs Court.

ANNUAL PARTNERS



Information is correct at time of printing, but may be subject to change, including late additions, cancellations, and booked-out sessions.